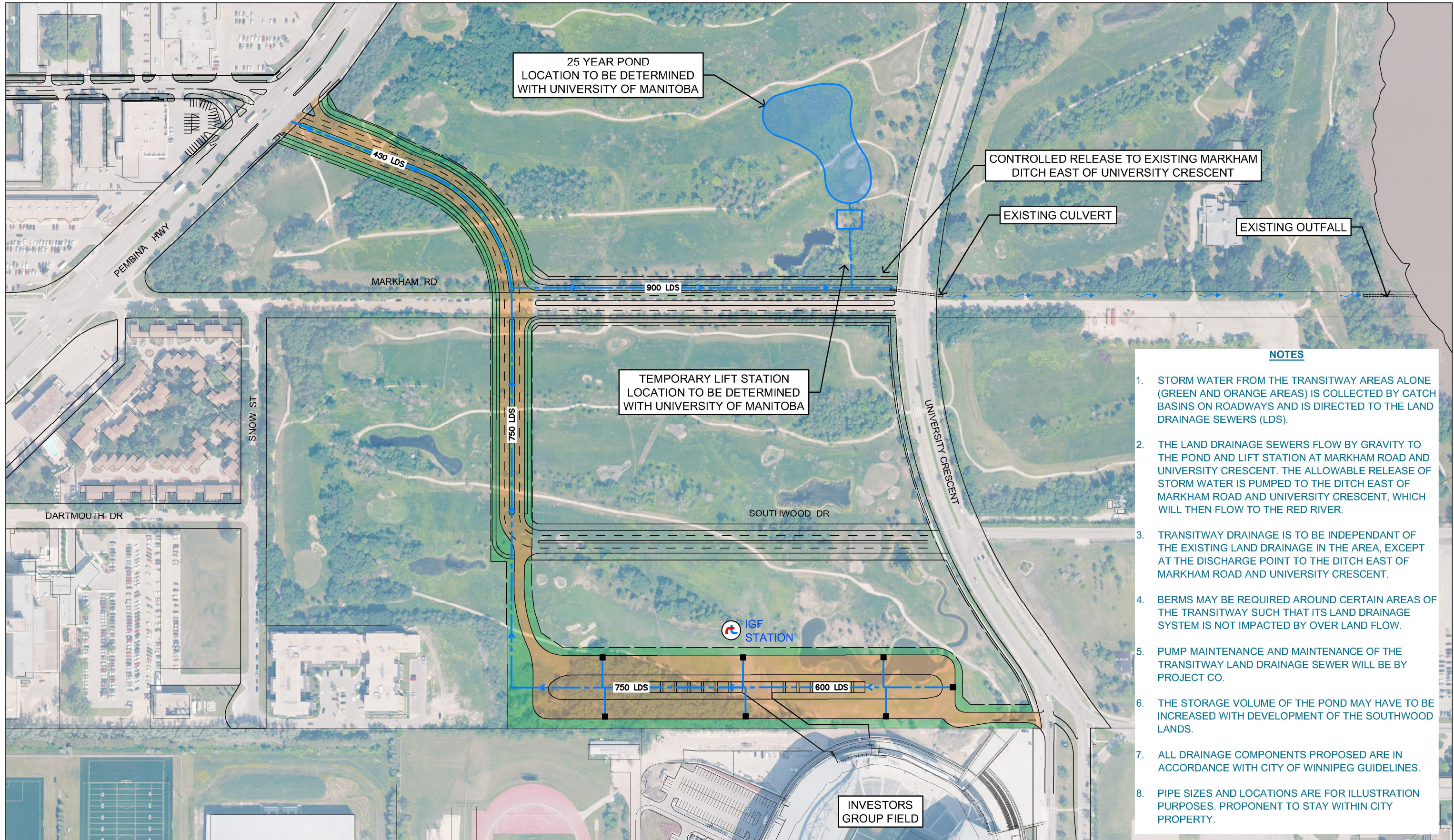


Appendix KK– U of M Land Drainage

G:\CAD\149845\Reference\DWG\149845-REF-D005-UofM-Drainage-Conceptual-Plan-2.dwg



25 YEAR POND
LOCATION TO BE DETERMINED
WITH UNIVERSITY OF MANITOBA

CONTROLLED RELEASE TO EXISTING MARKHAM
DITCH EAST OF UNIVERSITY CRESCENT

EXISTING CULVERT

EXISTING OUTFALL

TEMPORARY LIFT STATION
LOCATION TO BE DETERMINED
WITH UNIVERSITY OF MANITOBA

IGF
STATION

INVESTORS
GROUP FIELD

NOTES

1. STORM WATER FROM THE TRANSITWAY AREAS ALONE (GREEN AND ORANGE AREAS) IS COLLECTED BY CATCH BASINS ON ROADWAYS AND IS DIRECTED TO THE LAND DRAINAGE SEWERS (LDS).
2. THE LAND DRAINAGE SEWERS FLOW BY GRAVITY TO THE POND AND LIFT STATION AT MARKHAM ROAD AND UNIVERSITY CRESCENT. THE ALLOWABLE RELEASE OF STORM WATER IS PUMPED TO THE DITCH EAST OF MARKHAM ROAD AND UNIVERSITY CRESCENT, WHICH WILL THEN FLOW TO THE RED RIVER.
3. TRANSITWAY DRAINAGE IS TO BE INDEPENDANT OF THE EXISTING LAND DRAINAGE IN THE AREA, EXCEPT AT THE DISCHARGE POINT TO THE DITCH EAST OF MARKHAM ROAD AND UNIVERSITY CRESCENT.
4. BERMS MAY BE REQUIRED AROUND CERTAIN AREAS OF THE TRANSITWAY SUCH THAT ITS LAND DRAINAGE SYSTEM IS NOT IMPACTED BY OVER LAND FLOW.
5. PUMP MAINTENANCE AND MAINTENANCE OF THE TRANSITWAY LAND DRAINAGE SEWER WILL BE BY PROJECT CO.
6. THE STORAGE VOLUME OF THE POND MAY HAVE TO BE INCREASED WITH DEVELOPMENT OF THE SOUTHWOOD LANDS.
7. ALL DRAINAGE COMPONENTS PROPOSED ARE IN ACCORDANCE WITH CITY OF WINNIPEG GUIDELINES.
8. PIPE SIZES AND LOCATIONS ARE FOR ILLUSTRATION PURPOSES. PROPONENT TO STAY WITHIN CITY PROPERTY.



■ PROPOSED CATCH BASIN
 - - - PROPOSED LAND DRAINAGE SEWER (LDS) PIPE



CITY OF WINNIPEG - SOUTHWEST TRANSITWAY - STAGE 2

APPENDIX KK
U OF M LAND DRAINAGE